

Krytolize Your Concrete™

Build The Waterproofing Into Your Concrete

Discover Krytol technology and find out why we've been the world's leading concrete waterproofing company worldwide for over 30 years.

Our technicians, engineers, sales and support people are the most experienced and dedicated in the industry.

The "Product Specifier"

The Kryton Web Site makes specifying easier for you. The site www.kryton.com includes hundreds of detailed specifications, technical data sheets, MSDS and real world Case Studies—virtually everything you need to specify Kryton products on your next project. In addition, you can find a distributor in your area or find out how to become a distributor yourself.

For more information or technical support visit our web site www.kryton.com or contact one of our Customer Service Representatives at 1-800-267-8280.

Kryton Associations

- ACI - American Concrete Institute
- CSI - Construction Specifications Institute
- RMCA - Ready Mix Concrete Association
- AWWA - American Water & Wastewater Association
- NPA - National Parking Association
- NPSI - National Pool & Spa Institute
- CSC - Construction Specifications Canada
- FSCT - Federation of Societies for Coatings Technology
- ASA - American Shotcrete Association



*At the Lab. In the Field.
By Your Side.*

An ISO 9001:2000 Company

GURGAON :

Kryton Buildmat Co. Pvt. Ltd.

(A unit of KHI Capital Inc., Canada)
A-15/13, DLF City Phase-I, Gurgaon-122002
Telefax: +91(124) 4381140-42
Email: info@krytonbuildmat.com
Web: www.krytonbuildmat.com

REGD. OFFICE :

433, Ansal Chamber-II, 6, Bhikaji Cama Place
New Delhi - 110066
Tel.: +91 (11) 26181747, 26711736

WORLD DISTRIBUTION

Barbados
1-246-435-8600
Email: kryton@longview.bb

TECHNICAL HEADQUARTERS

8280 Ross Street
Vancouver, B.C.
Canada V5X 4C6
Email: info@kryton.com
Web: www.kryton.com
1-800.267.8280 or 1-604.324.8280

Ahmedabad, Bangalore, Chandigarh, Chennai, Kolkata, Lucknow and Mumbai



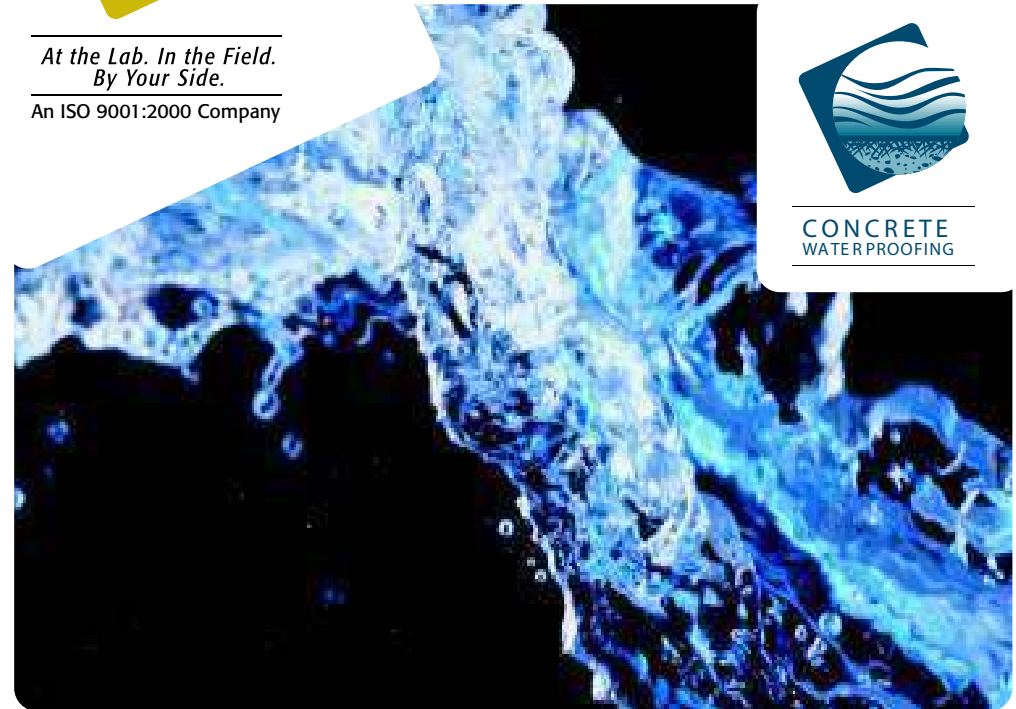
*At the Lab. In the Field.
By Your Side.*

An ISO 9001:2000 Company

Build The Waterproofing In
Krytolize Your Concrete™



CONCRETE
WATERPROOFING



K R Y S T O L



At the Lab. In the Field.
By Your Side.

KRYSTOL

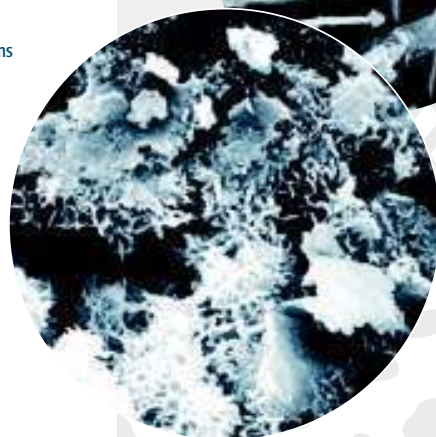
Transform Concrete Into An Impenetrable Water-Barrier

It's the intelligent, self-sealing water-protection system that transforms concrete into a powerful water-resistant barrier.

Krystol relies on a revolutionary crystalline technology that turns porous concrete into an impermeable barrier. The result is a structure with reduced cracking, self-sealing and water-resistant abilities that provides a powerful defense against water damage and corrosion of reinforcing steel.

So whether it's used in new construction, in upgrades to an existing structure or for repairing cracks, Krystol will help you build quality, reliability and cost-effectiveness into the concrete.

REGULAR CONCRETE: top
KRYSTOLIZED CONCRETE: bottom



The Proven Standard Around The World

How The Science of Krystol Works

Unlike old-fashioned external membranes, which rely on an additional hurdle to shield the concrete from moisture, Krystol actually transforms the concrete into a water-resistant barrier.

That's because Krystol becomes an integral part of the concrete matrix when applied to existing concrete or when added to the mix at the time of batching. When combined with water, Krystol reacts with the un-hydrated cement particles to form millions of needle-like crystals. These crystals fill the naturally occurring capillary pores and microscopic voids of the concrete.

Paths for harmful moisture and aggressive chemicals are blocked. Permanently.

The Self-Sealing Technology

Krystol continues to protect against potential water damage, because the crystallization process is activated whenever moisture is present, forming water-stopping crystals that block the path of moisture and aggressive chemicals anytime during the life of the concrete.

"I would recommend your Krystol systems to anyone who truly cares about building quality, waterproof structures."

— Lindsay Wilson, Director of Construction, Intrawest, Whistler/Blackcomb.

In other words, Krystol has the unique ability—even years later—to self-seal hairline cracks before they turn into costly cracks in your budget.

As the world leader in crystalline waterproofing technology, Krystol sets the standard for the entire industry, with over thirty years experience and construction projects in forty countries worldwide.

From Melbourne's Underwater World Aquarium (top left) and Ireland's Cathleen Falls Hydro Dam, to Boeing's Aircraft Development Center (top right), the world's largest building under a single roof, Krystol has proven itself in the most challenging and unforgiving conditions on the planet.

We understand your needs on every project and we work with you to provide effective solutions to the challenges you face every day.

Offers Solutions to Demand for Green

Krystol Crystalline Waterproofing System can contribute to achieving valuable LEED points in a variety of ways.



Krystol Internal Membrane

KIM

The Industry Standard
For New Construction

From Intrawest's Whistler/Blackcomb Resorts to Australia's Park Hyatt Hotel in Melbourne, the world's leading developers and builders rely on Krystol admixture to seal in the quality.

That's because world-class builders can't afford to compromise when it comes to new building construction. From parking structures and elevator pits, swimming pools and fountains to water reservoirs and water treatment tanks, Krystol Concrete Waterproofing Systems reduce construction and maintenance costs and improve reliability and durability.

K I M



At the Lab. In the Field.
By Your Side.

The Krystol Admixture For New Concrete

We call it "Krystol Internal Membrane," or KIM for short.

The world's leading waterproofing admixture, KIM is an environmentally friendly additive that's mixed directly into the concrete at the batching or mixing stage.

It's as simple as that.

The result is that the entire concrete mass turns into a water-resistant barrier. Without any external membrane systems or coatings. And without the potential for leaks, since Krystolized concrete actually self-seals micro-cracks in the concrete.

*"KIM is easy for our drivers to use
and our customers appreciate the
protection it provides against
moisture transmission problems
like mold and mildew."*

*— Brad De Haan, General Manager,
Ferndale Ready-Mix & Gravel,
Washington.*

Eliminate External Membrane Systems

As our customers worldwide can attest, KIM actually accelerates project schedules by eliminating the need for conventional membrane systems.

It reduces the cost of labor and material required for installing and maintaining surface-applied membrane systems.

Dive Into Water Containment

Krystol is NSF approved and certified for environments where concrete comes into contact with drinking water.

Krystolized concrete can be used anywhere in the water supply chain for water containment or in swimming pools and aquariums. Go ahead, dive right in!

Survive The Test Of Time

When you're working on a project, you're building a reputation. We want it to be one that survives the test of time.

Krystolized concrete prevents penetration of damaging waterborne contaminants and chloride-laden liquids that corrode reinforcing steel and compromise the life of your structure.

What's more, Krystolized concrete reduces shrinkage and cracking during the plastic and curing stages.

The Complete Waterproofing System

With Krystol, nothing slips through the cracks. Or the joints.

That's because our comprehensive waterproofing system includes the "Krystol Waterstop Joint Design", a complete system that forms an impenetrable seal in concrete construction joints, protecting against moisture and corrosive elements.

And there's more.

Now, you can also Krystolize your mortar with "Krystol Mortar Admixture", or KMA. This extraordinary product allows you to transform highly porous mortar into a water-resistant, crack-resistant shield that withstands the elements.

CONCRETE
WATERPROOFING



K R Y S T O L
T 1 & T 2

*"Almost 30 years ago we used the Krystol
Waterproofing Treatment to stop
substantial leaking in our concrete pits.
They are still dusty dry today and we
have been happy customers ever since."*

*—Ron Boyes, Superintendent,
Ocean Construction Ltd.*



*At the Lab. In the Field.
By Your Side.*

KRYSTOL T1&T2

Treatment System For New and Existing Concrete

It's never too late to Krystolize your concrete.

Whether you're upgrading a structure or sealing cracks, Krystol's concrete waterproofing treatments allow you to turn existing concrete structures into waterproof barriers reliably and cost-effectively.

The world's only permanent, in-depth surface-applied waterproofing treatment system, Krystol T1 and T2 grow into the concrete, becoming a permanent part of the structure, and providing a powerful water-resistant barrier that's unaffected by physical damage or UV radiation.

*"We tested Kryton's "Krystol
Concrete Waterproofing System"
on some damaged tanks and
within a couple of days the
leaks completely self-sealed. We
had never seen anything like it
and that is what sold us."*

*—Joe Docheff, Owner,
Mountain Park Concrete & Precast.*

How Krystol T1 and T2 Work

Krystol T1 and T2 are surface applied treatments that become an integral part of the concrete.

Once the Krystol formulation is applied to the substrate, it diffuses deep into the concrete through the medium of water. Millions of interwoven, needle-like crystals are formed throughout the pores and capillaries of the concrete.

The result is permanently waterproof concrete—even against strong hydrostatic pressure.

Permanent Crystalline Concrete Waterproofing

The KRYSTOL™ T1/T2 concrete waterproofing treatment is a cost-effective, permanent and reliable alternative to traditional membrane-based waterproofing systems for the prevention, repair and maintenance of existing concrete structures.

Krystol™ technology becomes an integral part of the concrete. It is surface applied to existing structures to repair leaking concrete and eliminate future leaking through micro cracks and pores. The Krystol™ T1/T2 System is permanent and replaces the need for conventional membranes. Krystol™ treated concrete lasts.

A Wide Range Of Applications

Krystol Concrete Waterproofing Systems have withstood the test of time in a range of applications for over 30 years.

From parking structures and warehouse floors to sewage plants, swimming pools and water reservoirs; in pre-cast, shotcrete and cast-in-place applications, Krystol builds the water-protection into your concrete.

< VANCOUVER LIBRARY: Krystol enables architectural diversity.

